

SURVEY UNIT,

MINISTRY OF HOUSING AND ENVIRONMENT

Ameenee Magu, Maafannu, Male', 20392, Maldives.

Office (PABX): +(960) 3004300, Fax: +(960) 3004301

Email: survey@mhe.gov.mv

Web: www.mhe.gov.mv



CONTROL POINT DETAILS

Station Number: PSM 5510

Coordinate Information

Geodetic

Grid

WGS 84

UTM Zone 43

Lat: 2° 54' 39.823430" N

E: 262625.590 m

Long: 72° 51' 52.320794" E

N: 321987.337 m

Ellp Height: -92.796 m

Orth Height: 1.062 m

Island: Dh.Vommuli

Date: 9th December 2013

Monument description & method of survey:

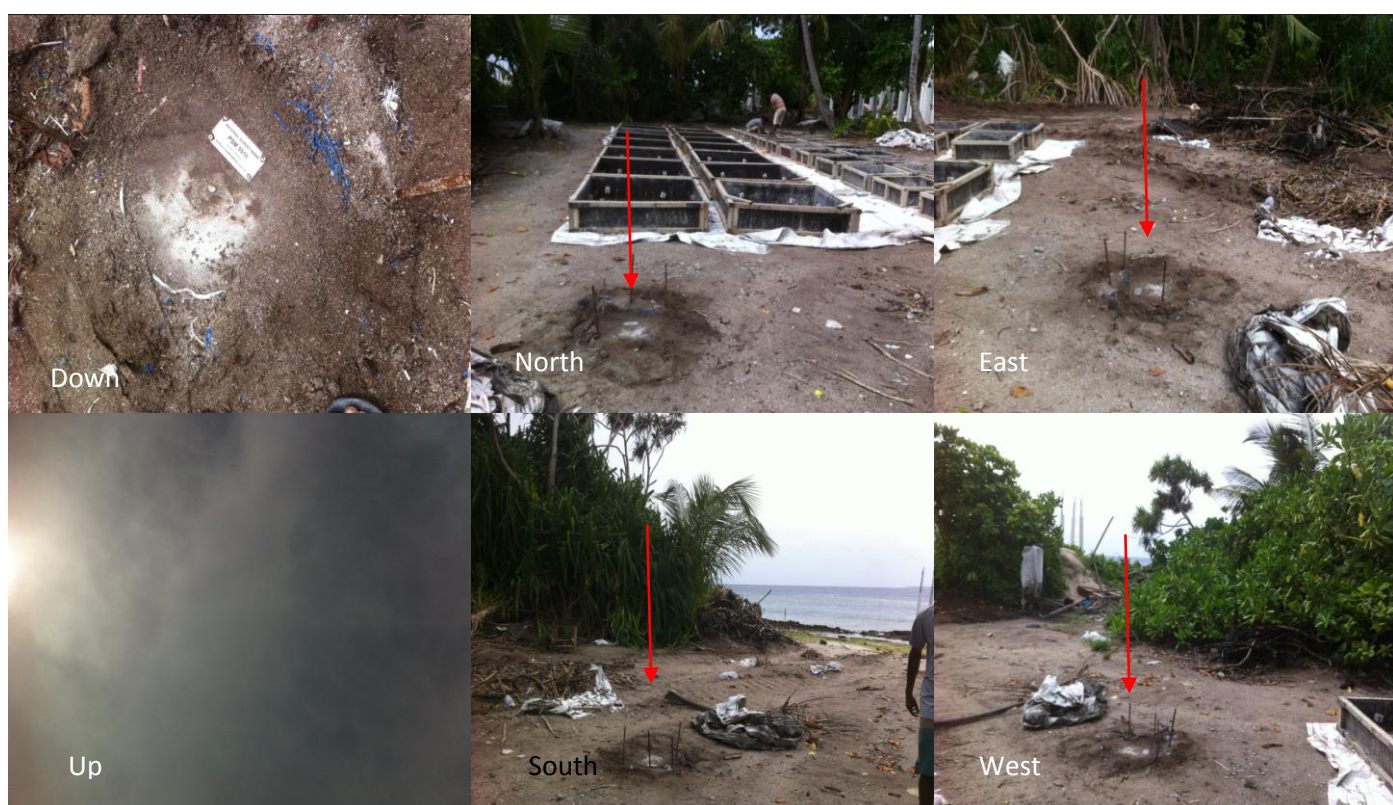
The PSM is constructed according to Monument type A .The marker is at ground level.

The PSM is positioned using static GNSS surveying method. As this is the datum point, about 5 hours of GNSS observations was done. All other control points are surveyed in relative to this control point.

General site condition & access:

This PSM is located in the western side of the island. The marker is located in an open space with easy accessibility.

Owner: Vermillion International Pvt Ltd

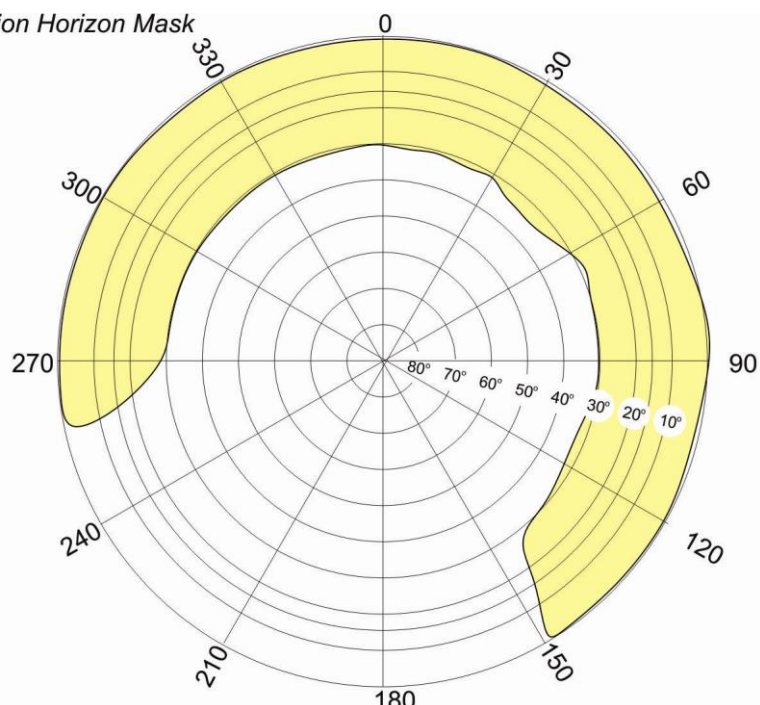


SITE INFORMATION

Station Number

PSM 5510

Station Horizon Mask

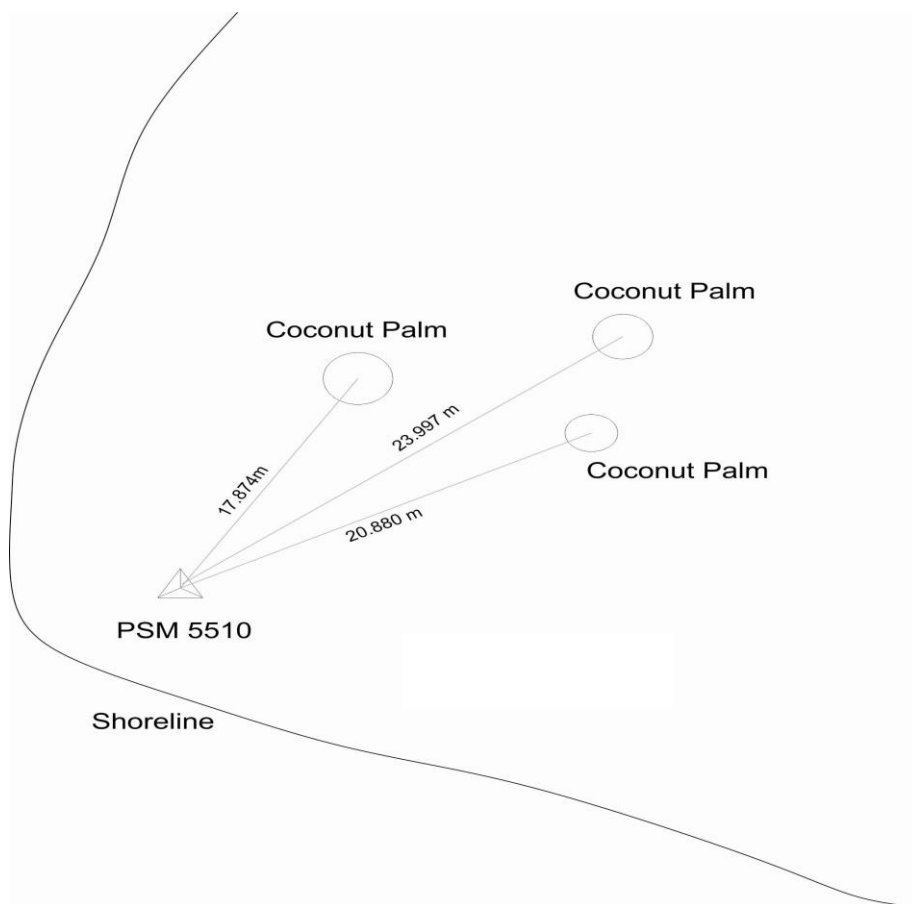


Height above Marker that horizon was mapped from 1.500 m

Magnetic Declination
Declination applied to this figure?
☐ Yes ☒ No



Locality



Sketched by: Faruhath Jameel

Scale: Not to scale

Date: 9th December 2013

SURVEY UNIT,

MINISTRY OF HOUSING AND ENVIRONMENT

Ameenee Magu, Maafannu, Male', 20392, Maldives.

Office (PABX): +(960) 3004300, Fax: +(960) 3004301

Email: survey@mhe.gov.mv

Web: www.mhe.gov.mv



CONTROL POINT DETAILS

Station Number: PSM 5508

Coordinate Information

Geodetic

Grid

WGS 84

UTM Zone 43

Lat : 2° 54' 40.181622" N

E: 262950.469 m

Long: 72° 52' 2.836865" E

N: 321997.728 m

Ellp Height: -92.429m

Orth Height: 1.430 m

Island : Dh.Vommuli

Date : 9th December 2013

Monument description & method of survey:

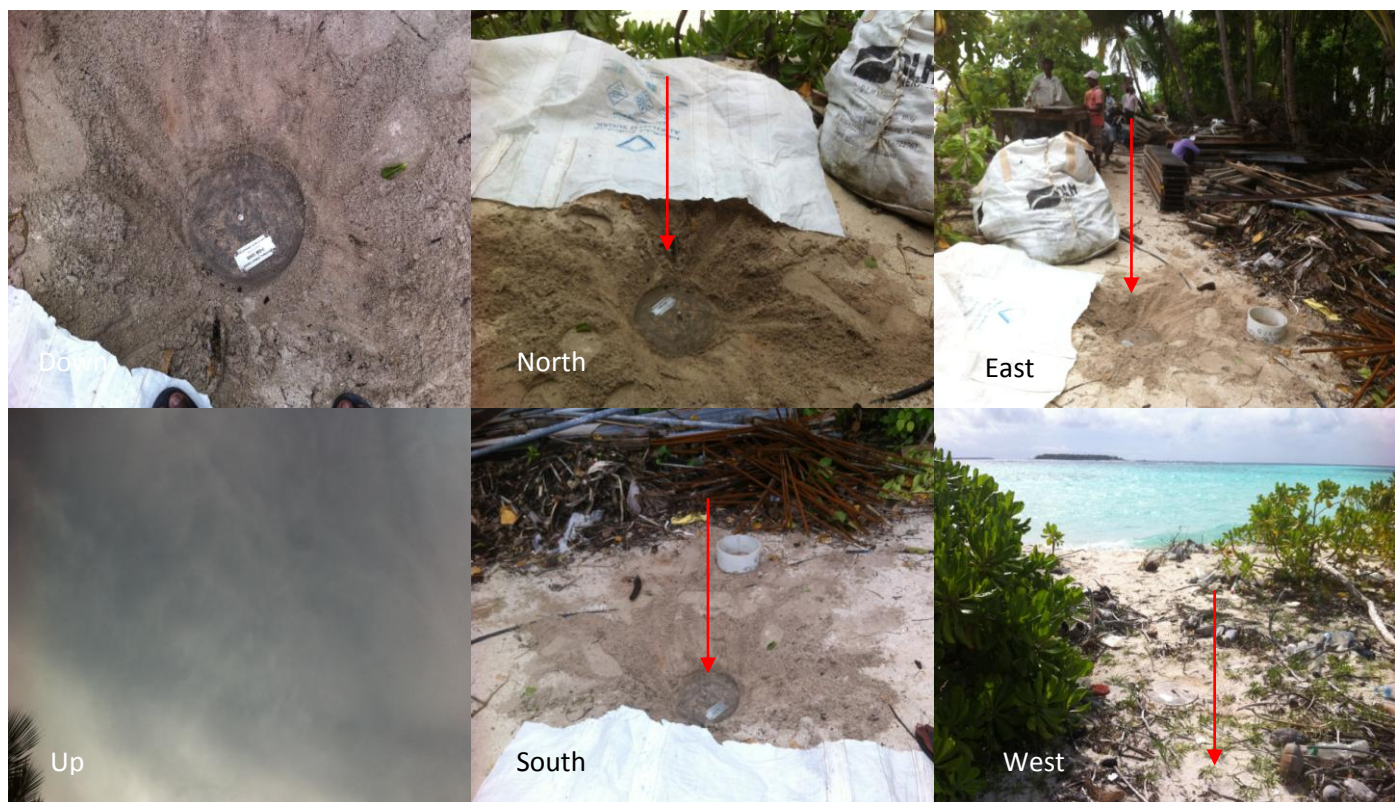
The PSM is constructed according to monument type A. The marker is at ground level to protect it from getting disturbed and for safety reasons.

The PSM is positioned using static GNSS surveying method in relative PSM5510

General site condition & access:

PSM5508 and PSM5509 are inter-visible stations. This PSM is located on the western side of the island near to the shoreline. The marker is located in an open space with easy accessibility

Owner: Vermillion International Pvt Ltd

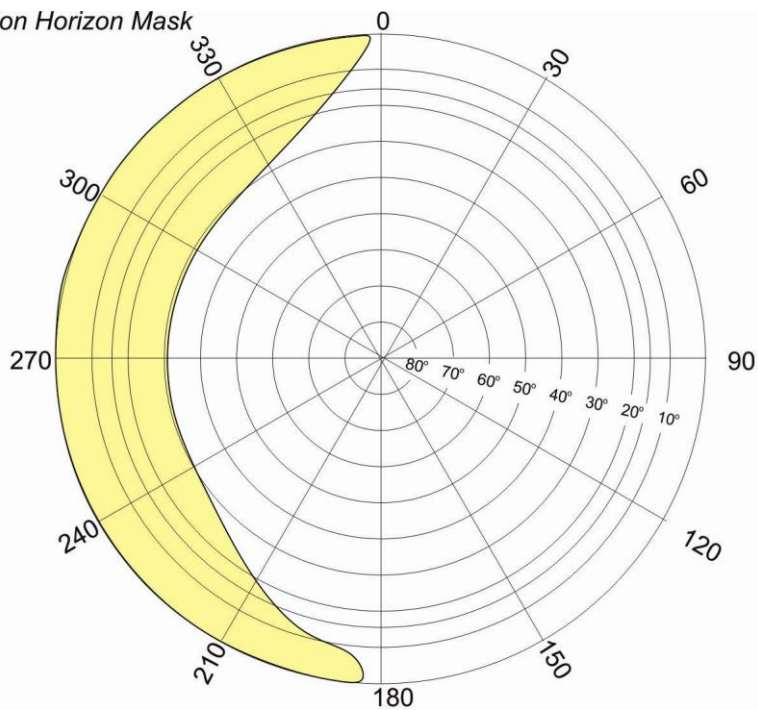


SITE INFORMATION

Station Number

PSM 5508

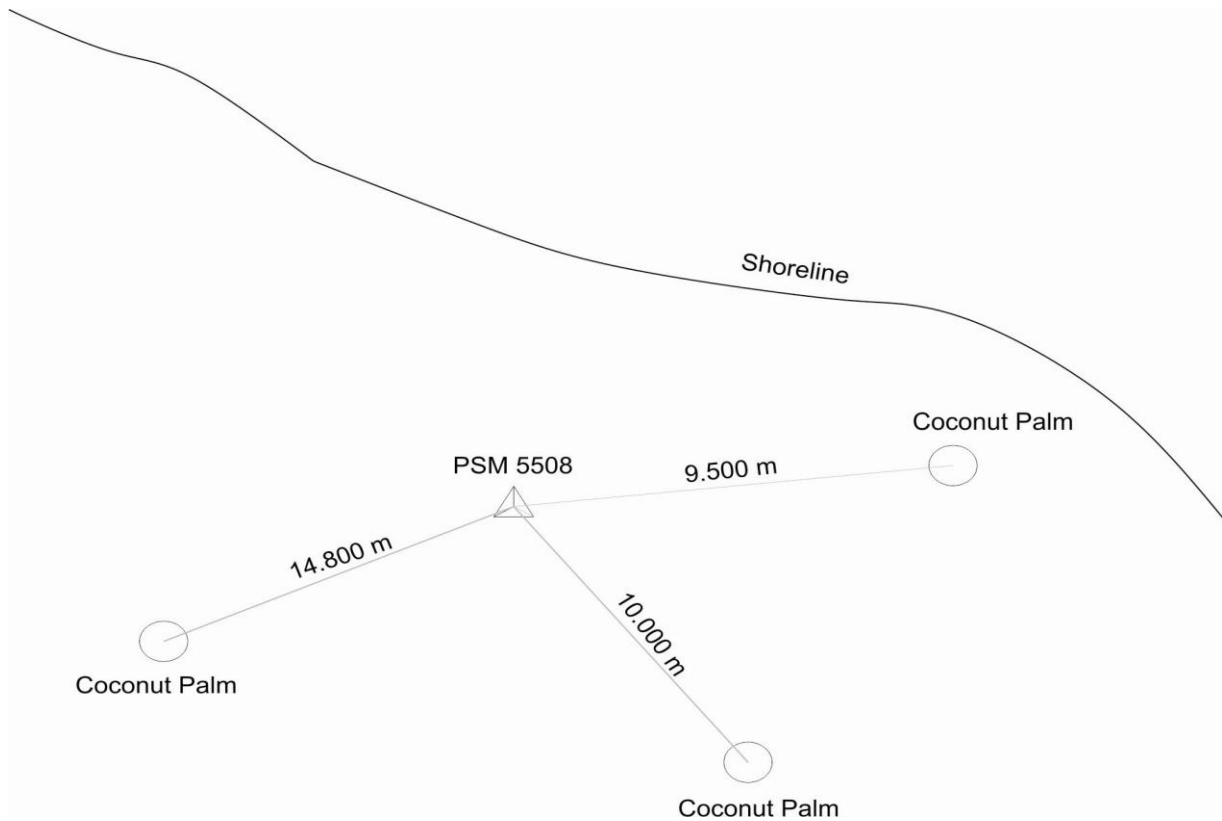
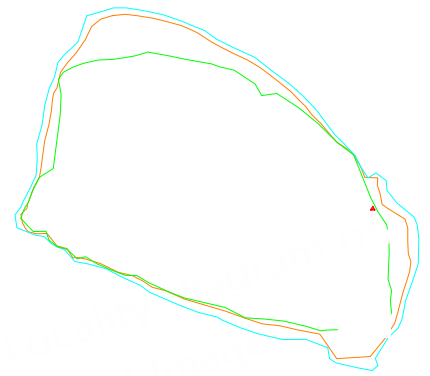
Station Horizon Mask



Height above Marker that horizon was mapped from 1.500 m

Magnetic Declination
Declination applied to this figure?
☐ Yes ☒ No

Locality



Sketched by: Faruhath Jameel

Scale: Not to scale

Date: 9th December 2013

SURVEY UNIT,

MINISTRY OF HOUSING AND ENVIRONMENT

Ameenee Magu, Maafannu, Male', 20392, Maldives.

Office (PABX): +(960) 3004300, Fax: +(960) 3004301

Email: survey@mhe.gov.mv

Web: www.mhe.gov.mv



CONTROL POINT DETAILS

Station Number: PSM 5509

Coordinate Information

Geodetic	Grid
WGS 84	UTM Zone 43
Lat: 2° 54' 39.238632" N	E: 262959.497 m
Long: 72° 52' 3.130916" E	N: 321968.737 m
Ellp Height: -92.116 m	Orth Height: 1.742 m

Island: Dh.Vommuli	Date: 29 th December 2013
--------------------	--------------------------------------

Monument description & method of survey:

The PSM is constructed according to monument type A. The marker is at ground level to protect it from getting disturbed and for safety reasons.

The PSM is positioned using static GNSS surveying method in relative PSM5510

General site condition & access:

PSM5508 and PSM5509 are inter-visible stations. This PSM is located on the western side of the island near to the shoreline. The marker is located in an open space with easy accessibility

Owner: Vermillion International Pvt Ltd

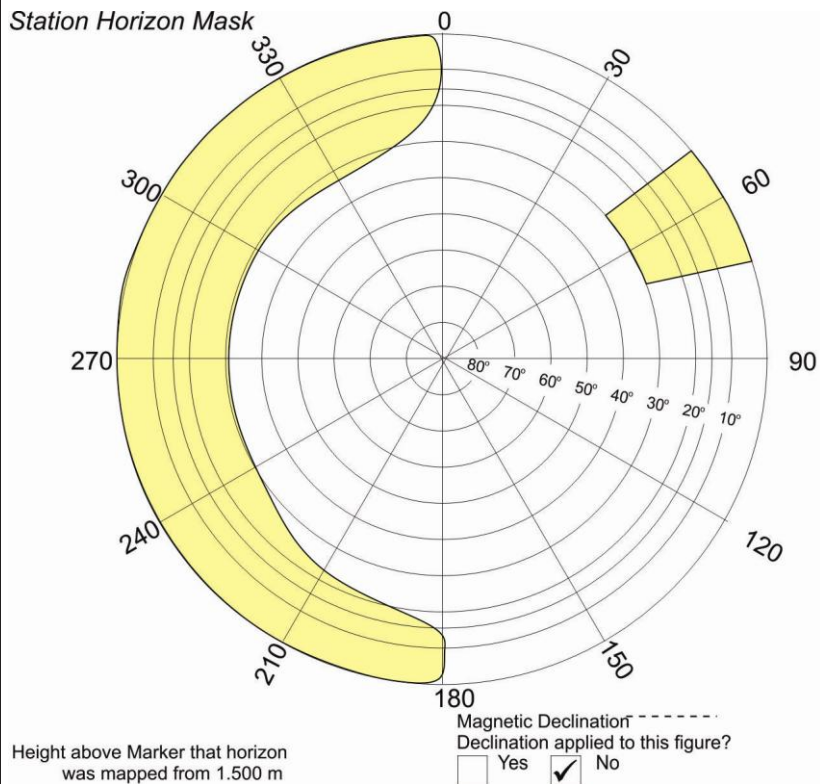


SITE INFORMATION

Station Number

PSM 5509

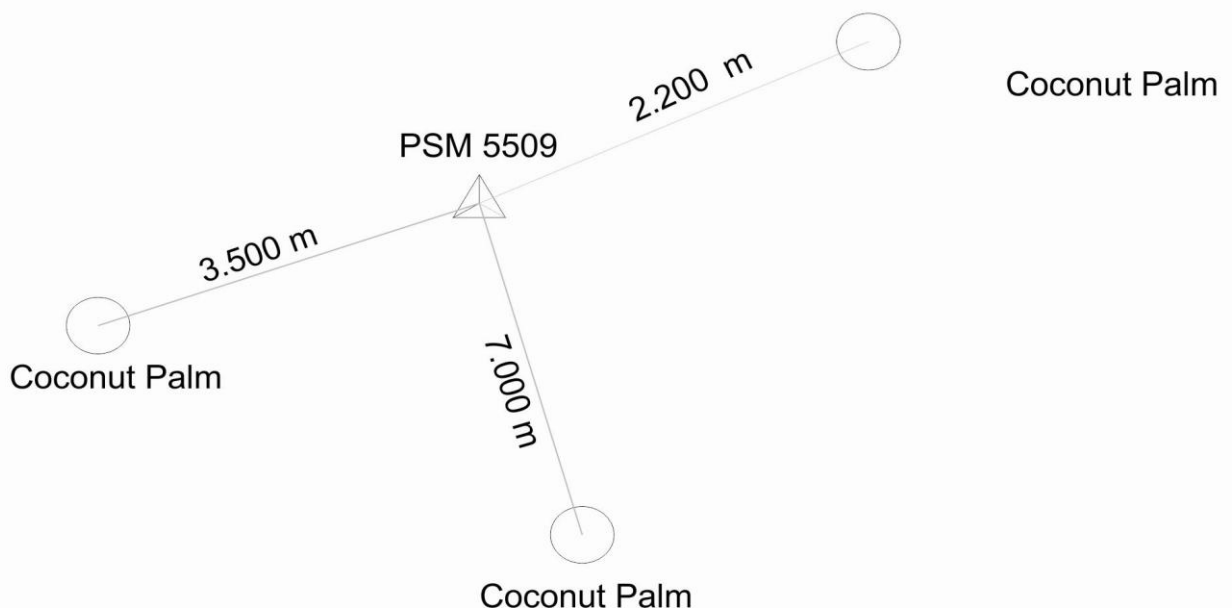
Station Horizon Mask



Locality



Shoreline



Sketched by: Faruhath Jameel

Scale: Not to scale

Date: 9th December 2013